

DIS COVERING

THE WAY IN WHICH OBJECTS/SURFACE APPEAR TO THE EYE



MY EXPERIMENTATION ARE ABOUT VARIOUS PERSPECTIVES OF OBJECTS AND THE EXPERIENCE IT CAN BRING. STARTING WITH LIGHT AND HOW IT CAN REFLECTS OR MAKE A DIFFERENCE LED ME TO A ONGOING JOURNEY PLAYING WITH OPPOSITES, CONTRASTS, FORCES IN MOTION AND MOVEMENTS IN SPACE WHERE I'M SET TO CREATE AN UNEXPECTED SITUATION INSIDE OR AROUND OBJECTS.

IN MY EXPERIMENTS THERE ARE FOUR MAIN PARAMETERS: SCALE, TIME, INTERACTION AND MATERIAL. BY SCALE NOT ONLY DO I MEAN IN SIZE BUT ALSO IN QUANTITY AND DIMENSION. I OBSERVE PLASTIC GEOMETRIC SCULPTURES TO PHOTOGRAPHS OF SPLASHING WATER. SOME OBJECTS STAND ALONE WHILE OTHERS ONLY EXIST IN A GROUP. THE SITUATIONS ARE CREATED BY DIFFERENT ACTIONS OR LIGHTING THAT LASTS ONLY FOR A FLEETING MOMENT. TAKING CARE OF MIXING OPPOSITE MEDIUMS, USING MATERIALS IN UNTYPICAL WAYS AND MAKING THEM TAKE A OPPOSITE LOOK IS A KEY PART OF MY EXPERIMENTS.

PRESENTING MY EXPERIMENT, DIFFERENT IDEAS ARISE OF WHAT MY PROJECT PROJECTS. IS IT A STORY ABOUT MY VISIT TO A NEW UNIVERSE, IS ALL NOT WHAT IT SEEMS OR IS IT A STUDY OF HOW COLOURS, LIGHT AND MATERIAL REACT TO DIFFERENT CIRCUMSTANCES. I JUST ASK THE OBSERVER TOO LOOK AT IT WITH THEIR OWN PERSPECTIVE.

DIS COVERING

THE WAY IN WHICH OBJECTS/SURFACE APPEAR TO THE EYE

TWISTED

SALTED

MELTED

STRETCHED

TURNED

UNCOVERED#1

UNCOVERED#2

CRUSHED

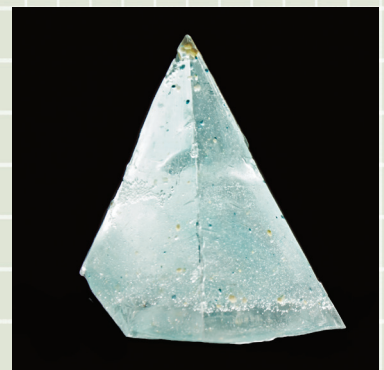
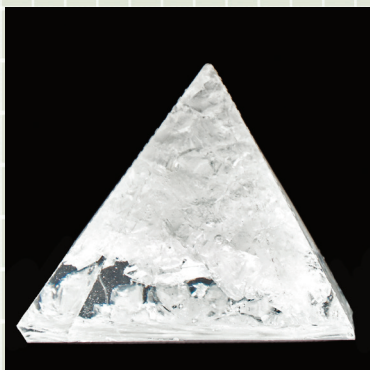
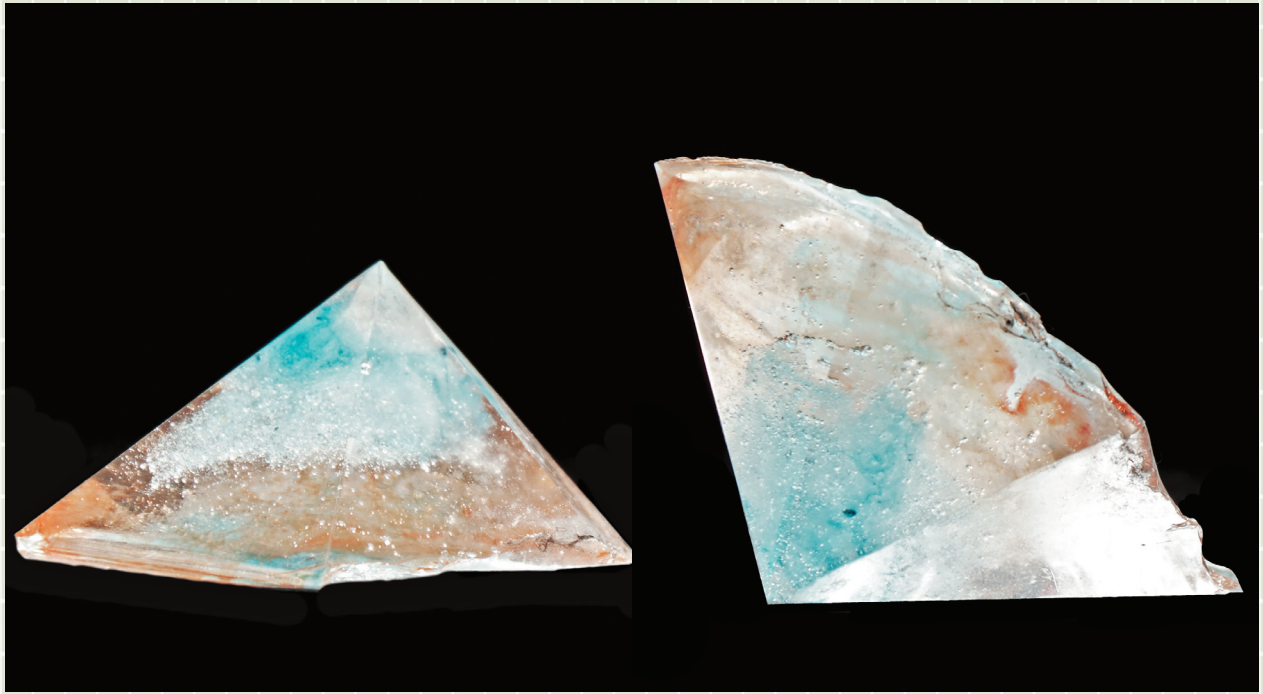
MIXED

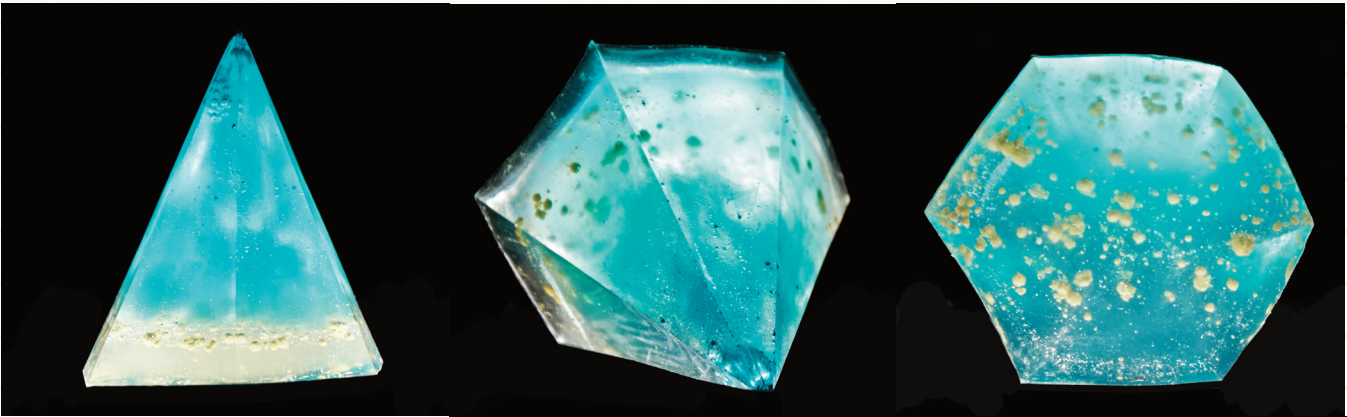
SPLASHED

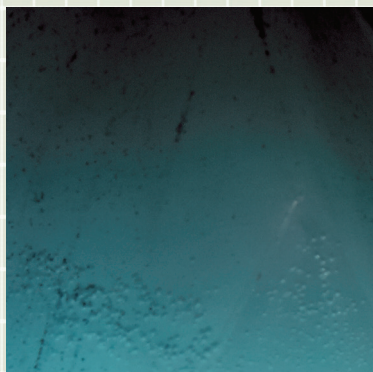
TWISTED

MATERIAL: RESINE EPOXY, PIGMENT.
MADE: MOLD MADE BY LASERCUTTING POLYESTER FILM.
DISCOVERD: LIGHT CHANGE COLOURS AND REFLECTION.

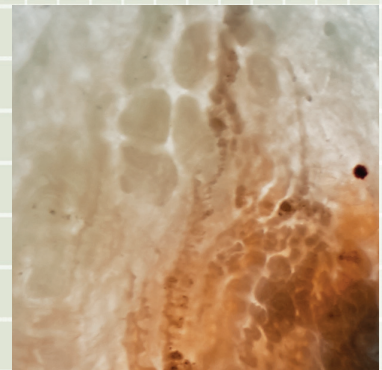
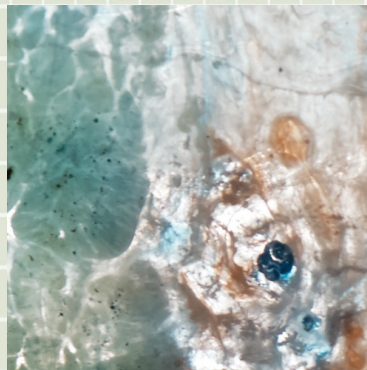
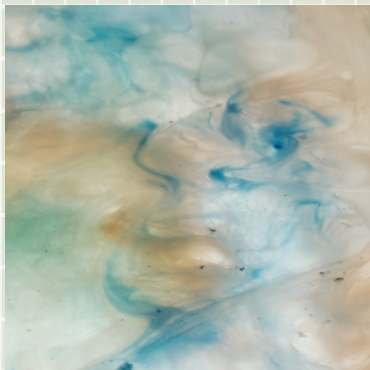
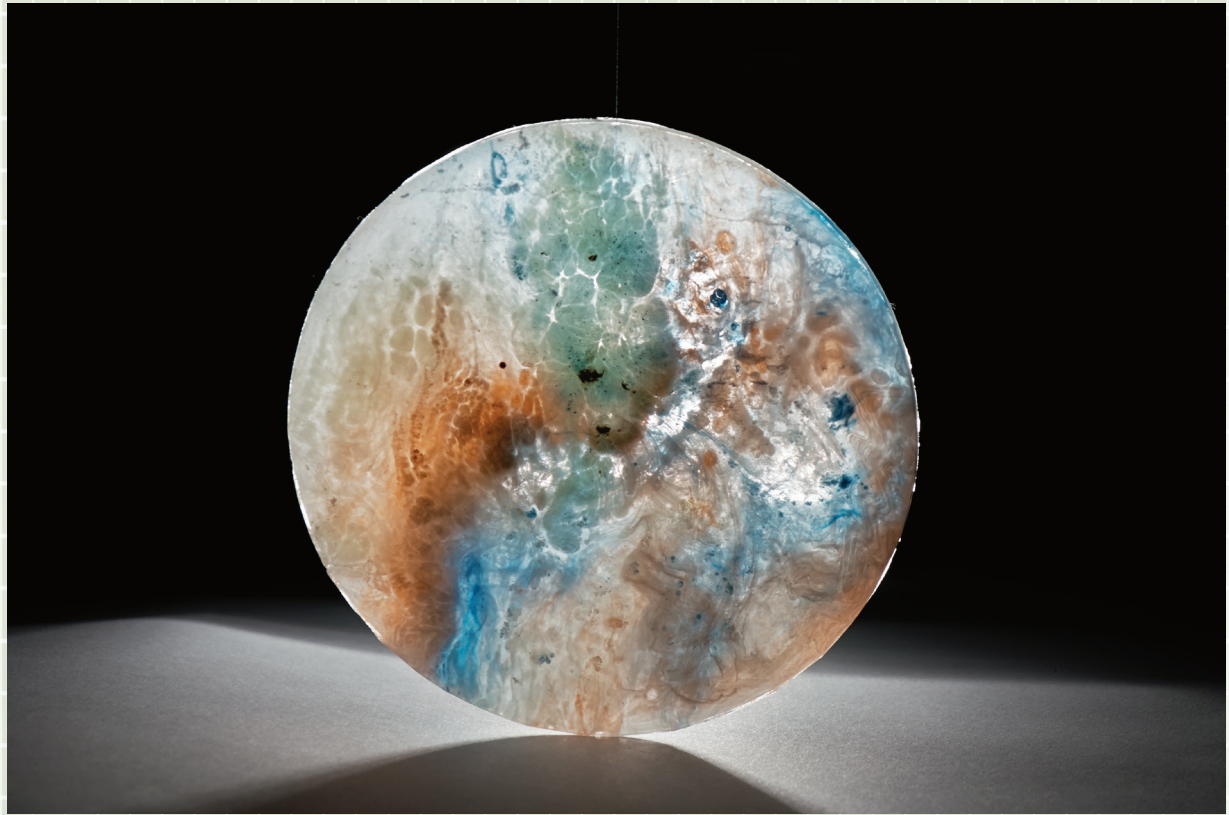


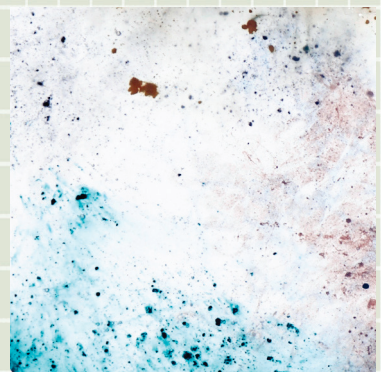
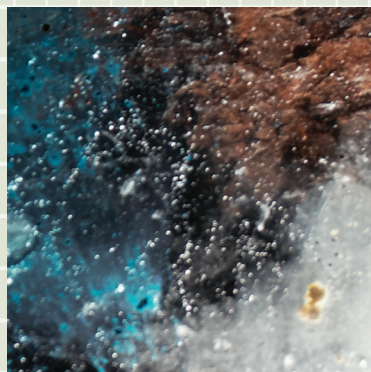
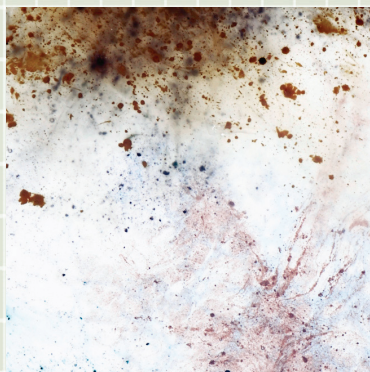


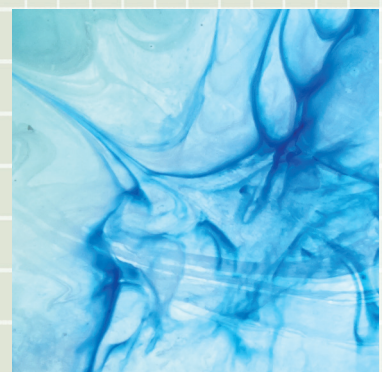
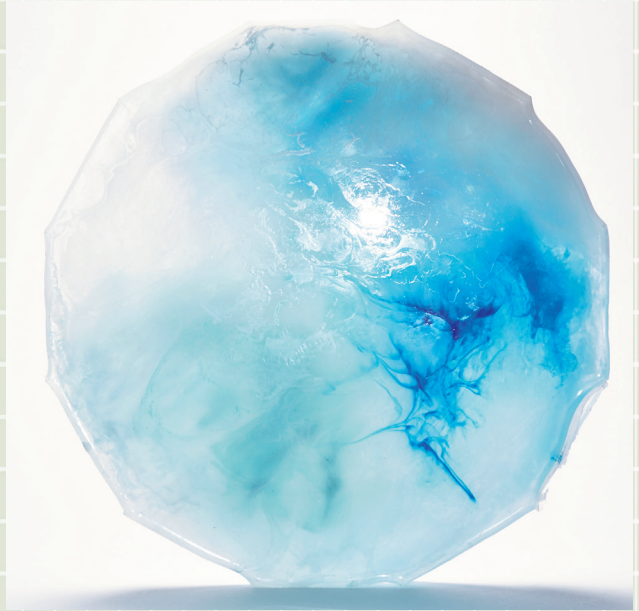












SALTED

MATERIAL: ALUM SALT
AND WATER.

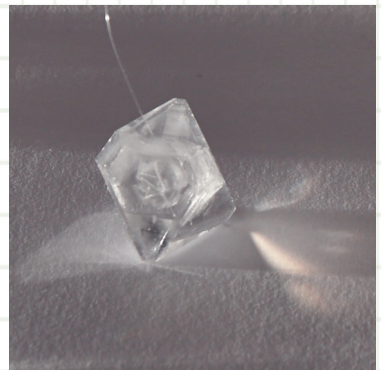
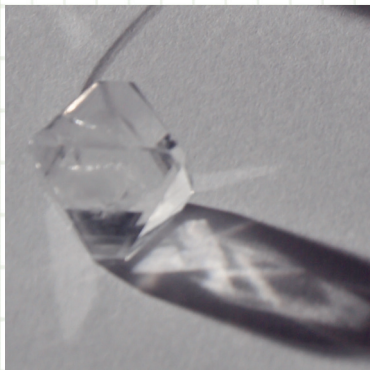
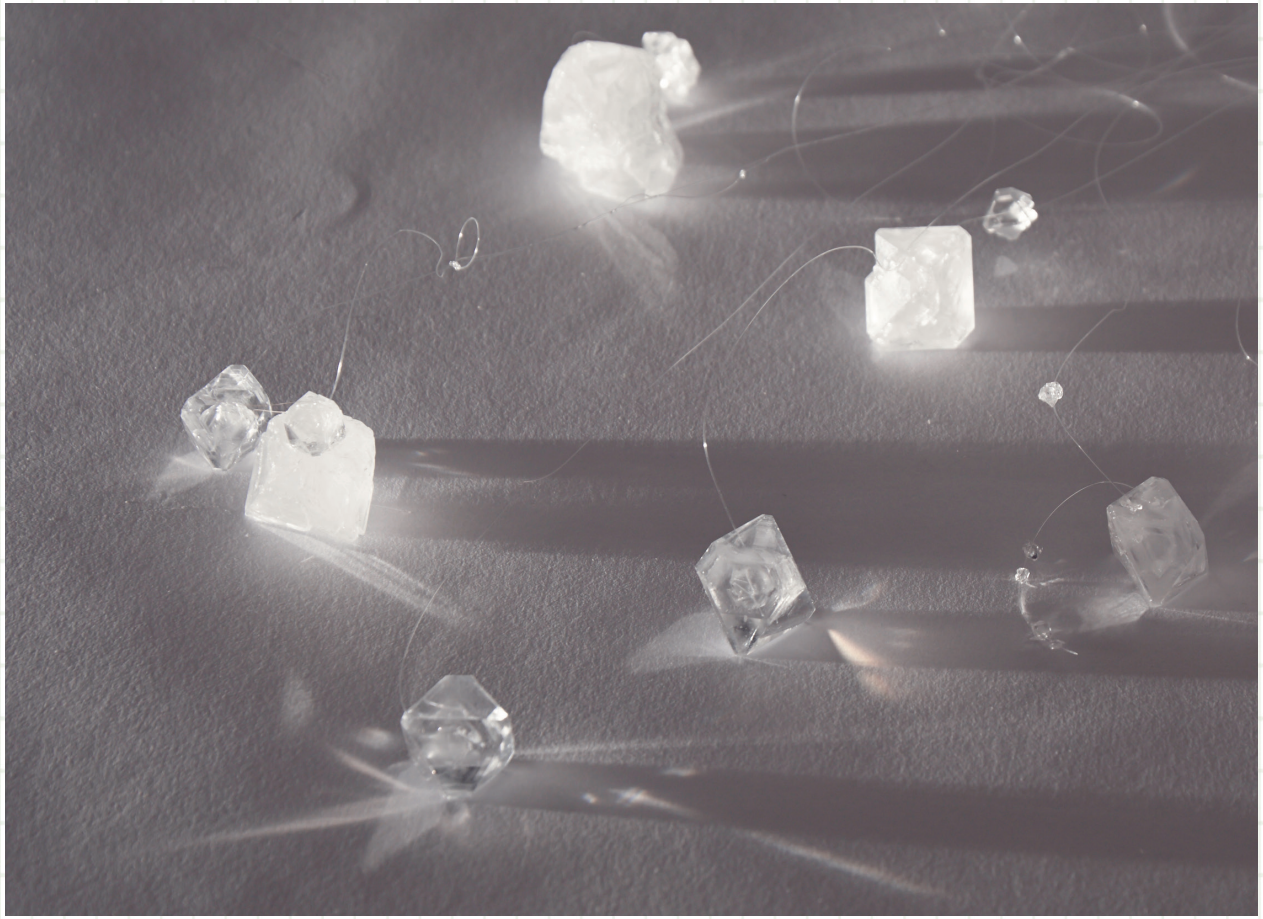
MADE: GROWN IN A GLASS
CONTAINER.

DISCOVERD:

AS GROWING: TEMPERA-
TURE AND AMOUNT OF
SALT AFFECTS THE SHAPE
AND TRANSPARENCY.
LIGHT MAKES PRISM AND
REFLECTION.



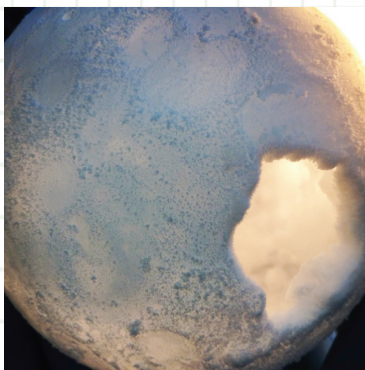


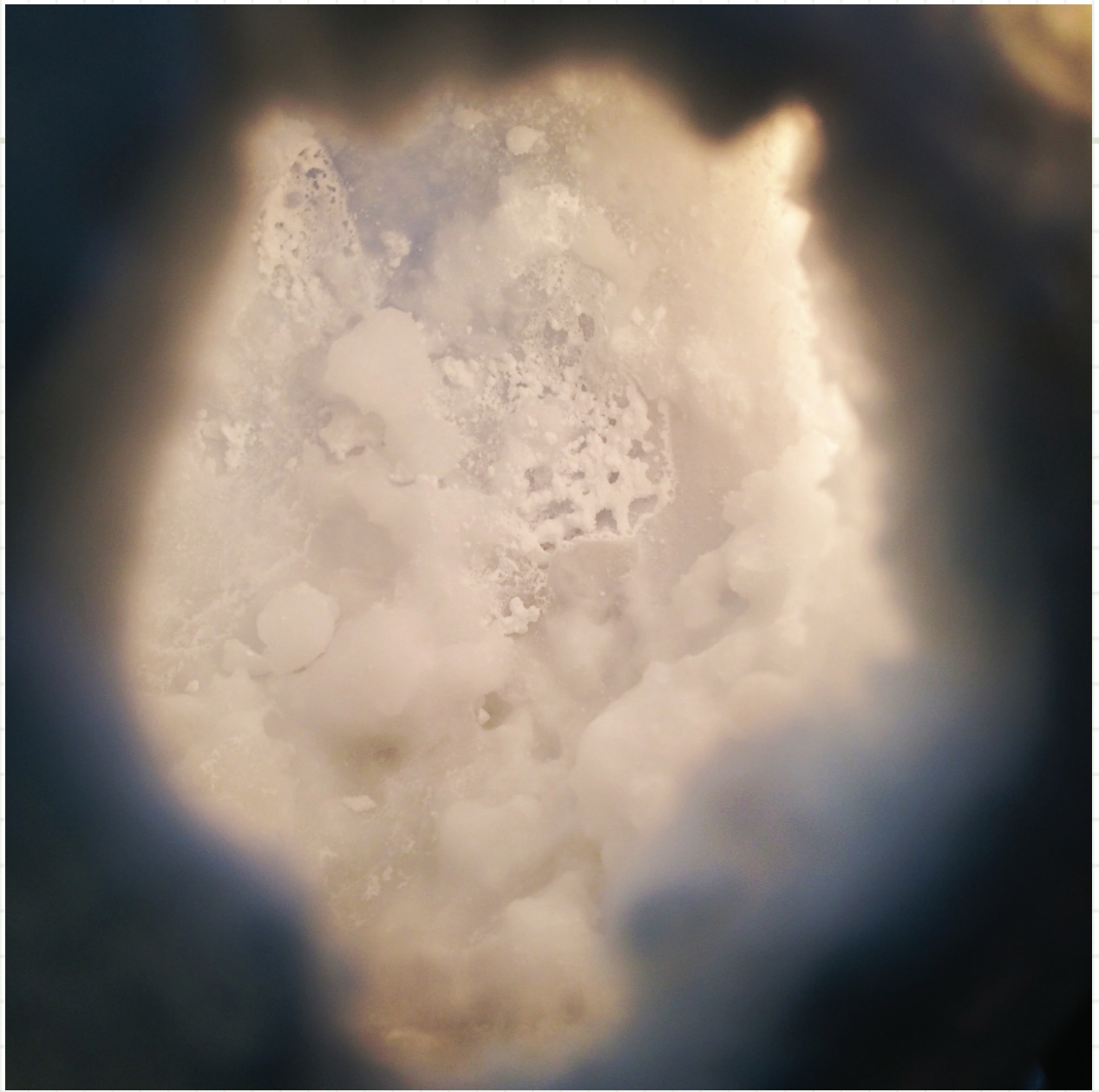




MELTED

MATERIAL: WATER AND NITROGEN LIQUID.
MADE: WATER IS FROZEN INSIDE A BALLON.
DISCOVERD: SENSITIVE TO LIGHT.



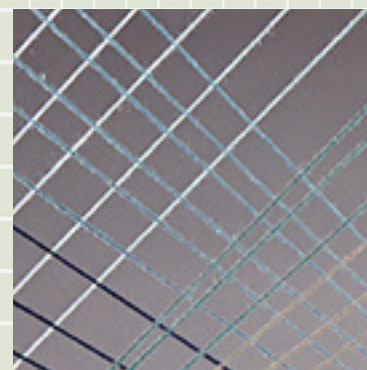
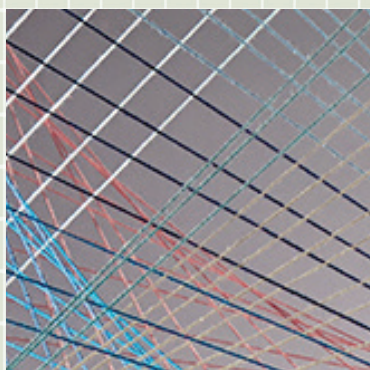
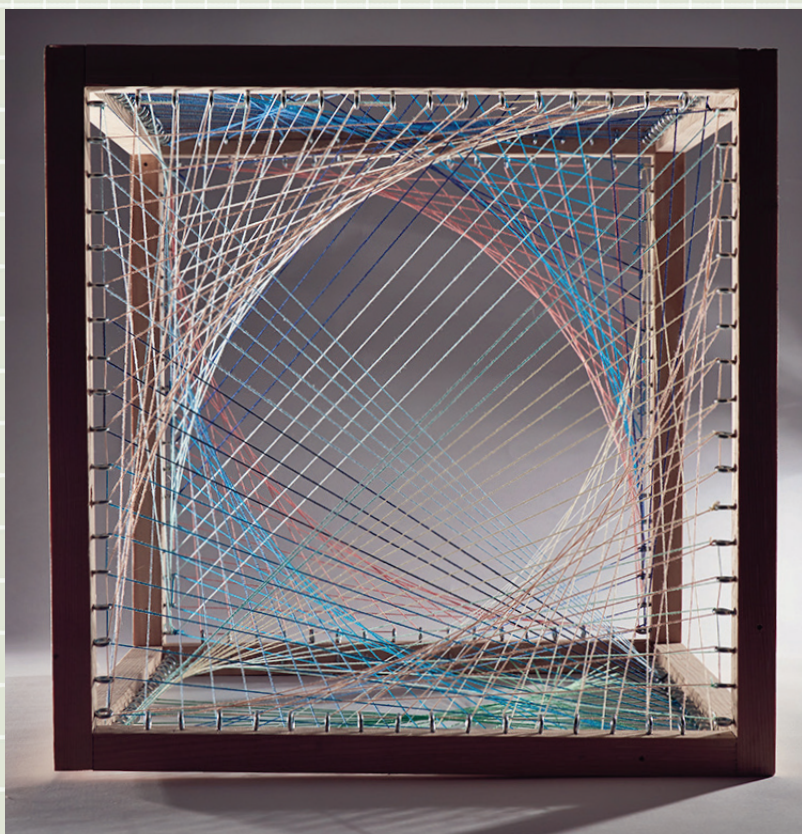


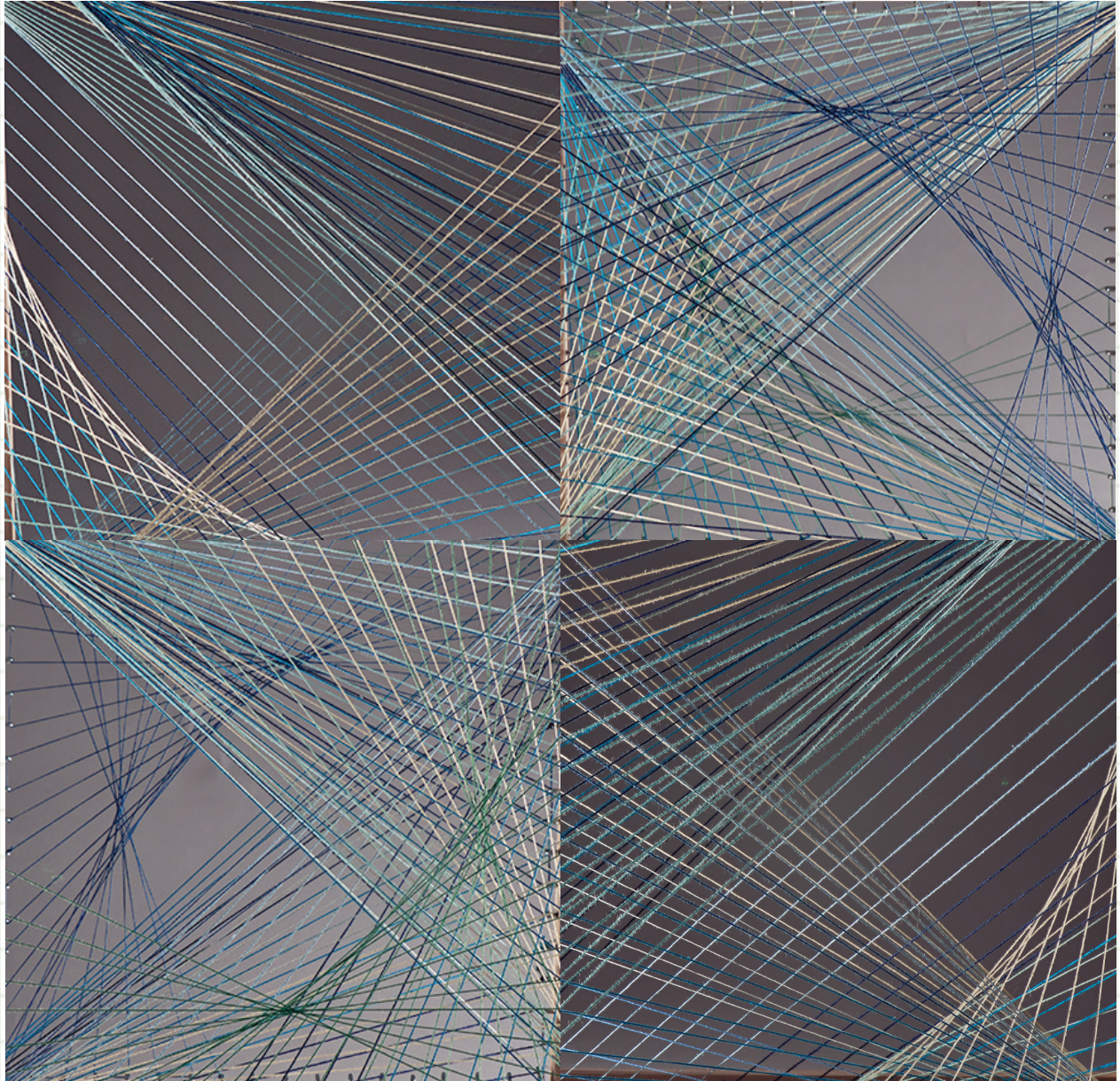
STRETCHED

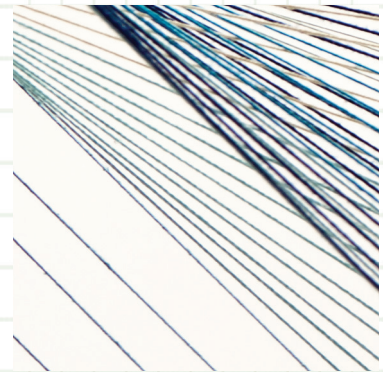
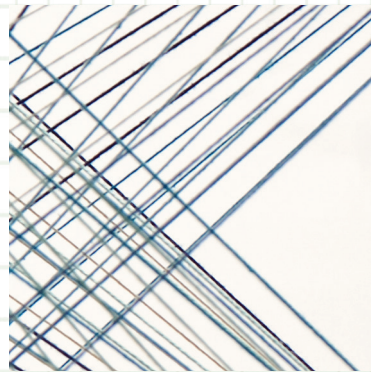
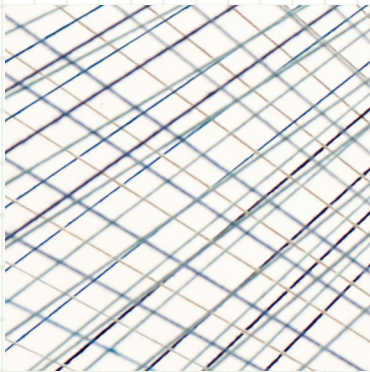
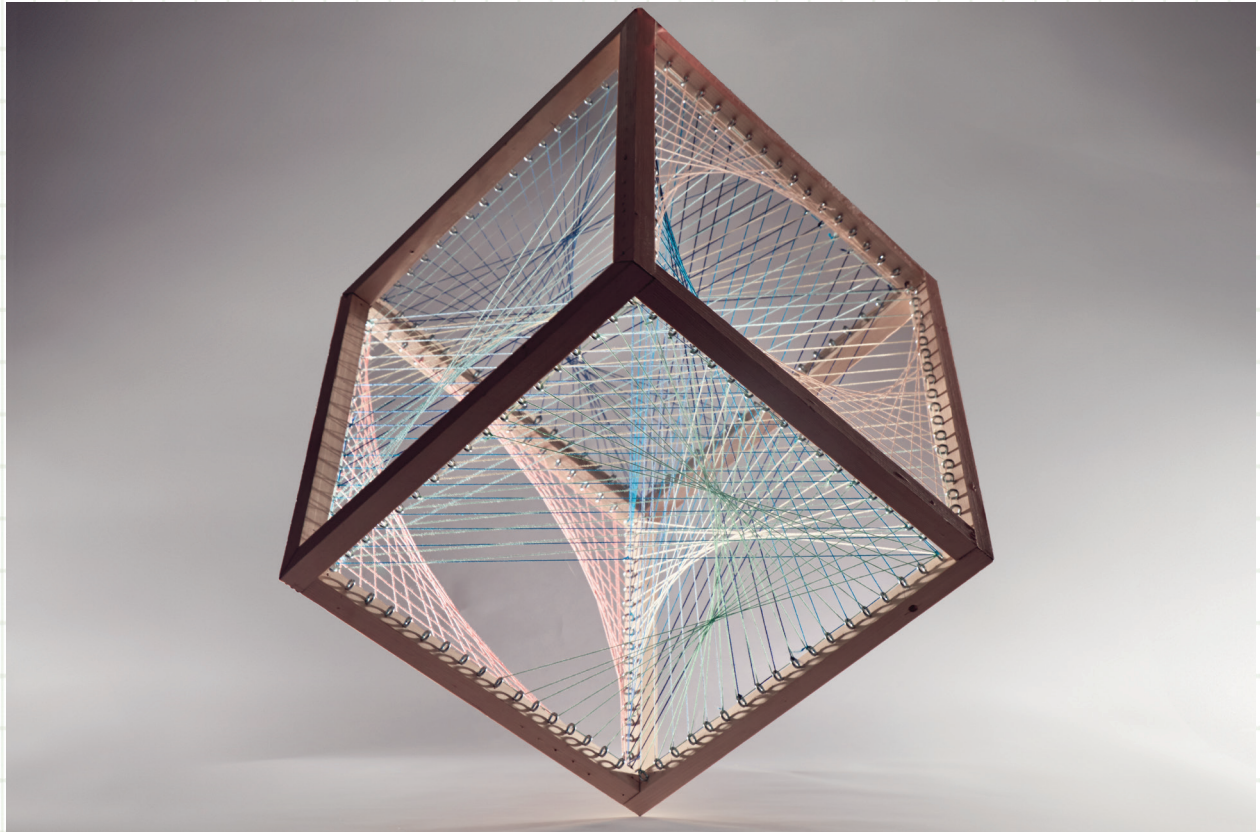
MATERIAL: COTTON STRINGS, WOOD AND HOOKS.

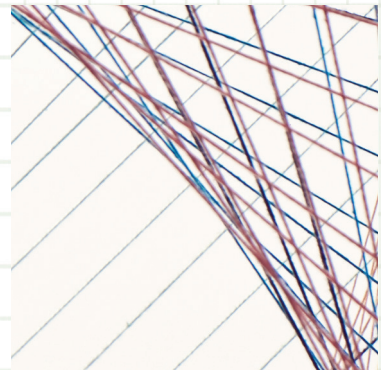
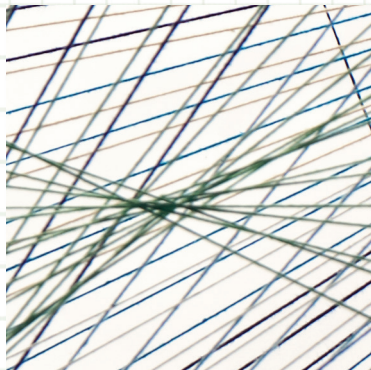
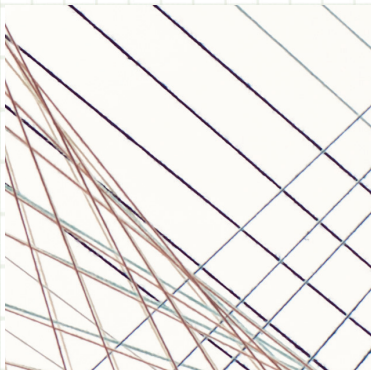
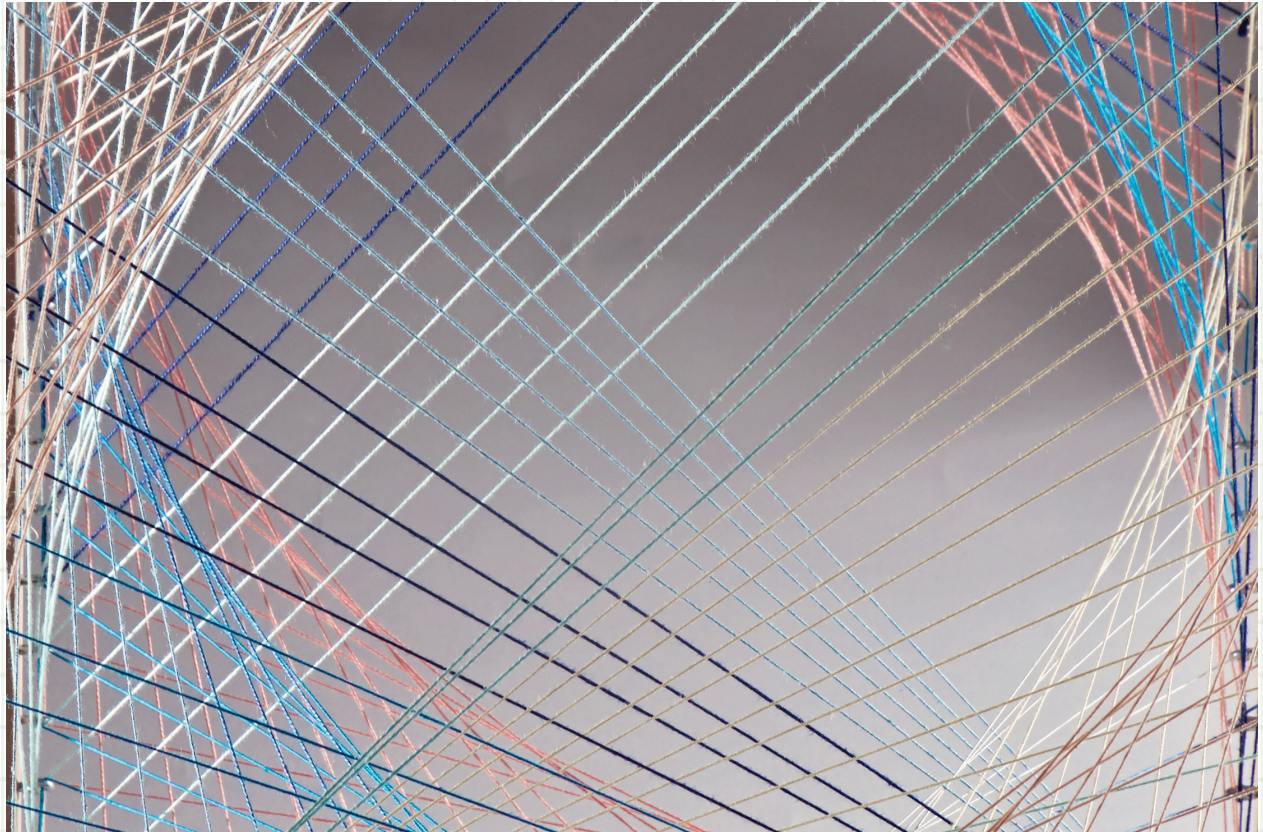
MADE: STRING STRETCHED BETWEEN HOOKS.

DISCOVERD: OBJECT CHANGE BY MOVEMENTS
OF PERSPECTIVE AND LIGHT.







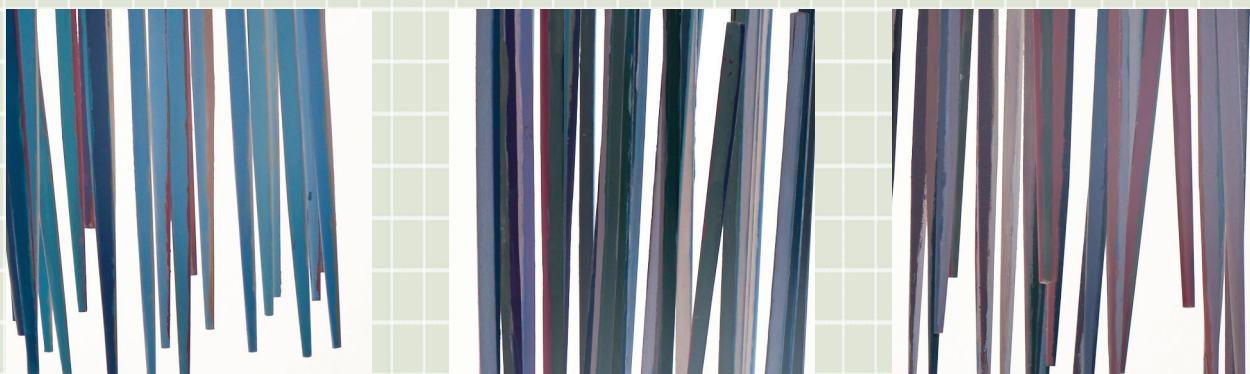
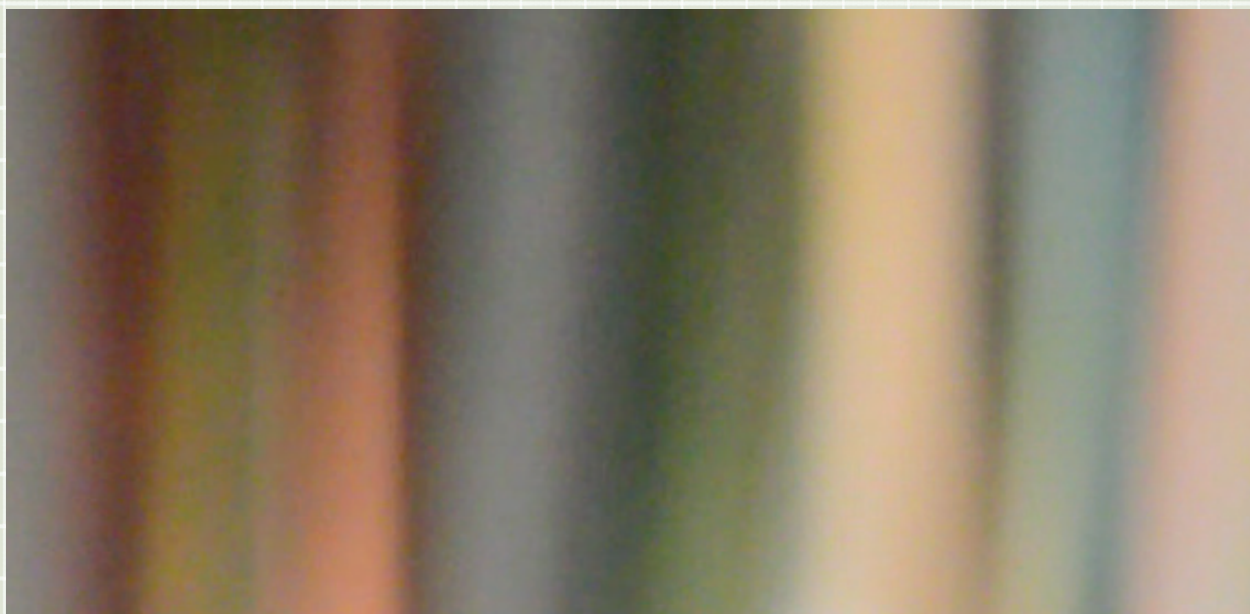


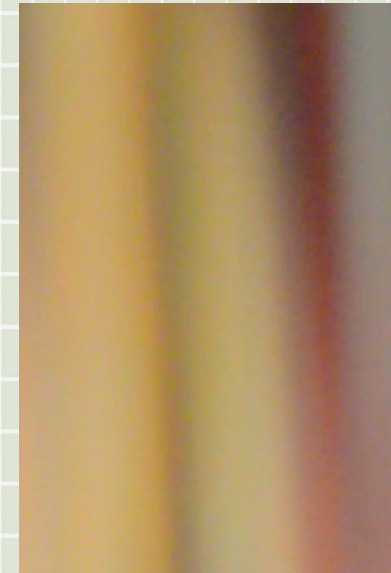
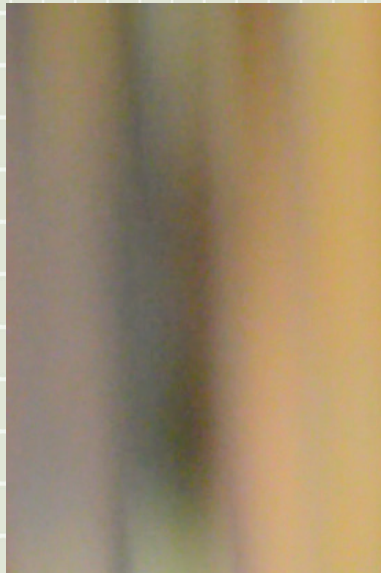
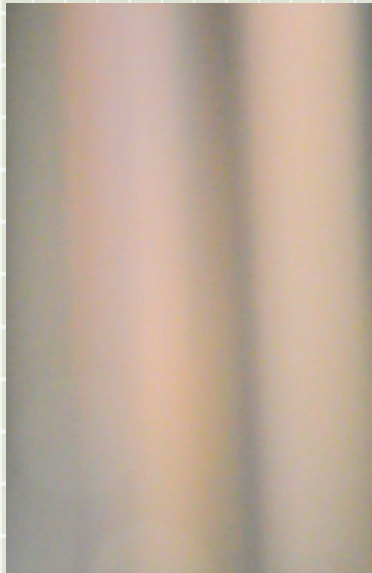
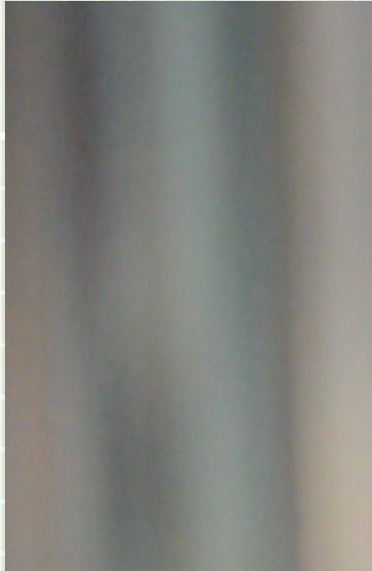
TURNED

MATERIAL: CHOPSTICKS AND PAINT.

MADE: EACH SIDE IS PAINTED DIFFERENTLY
AND STICKS HANGED BY COLOR SIDE.

DISCOVERD: OBJECT CHANGE BY MOVEMENTS
OF PERSPECTIVE AND LIGHT.



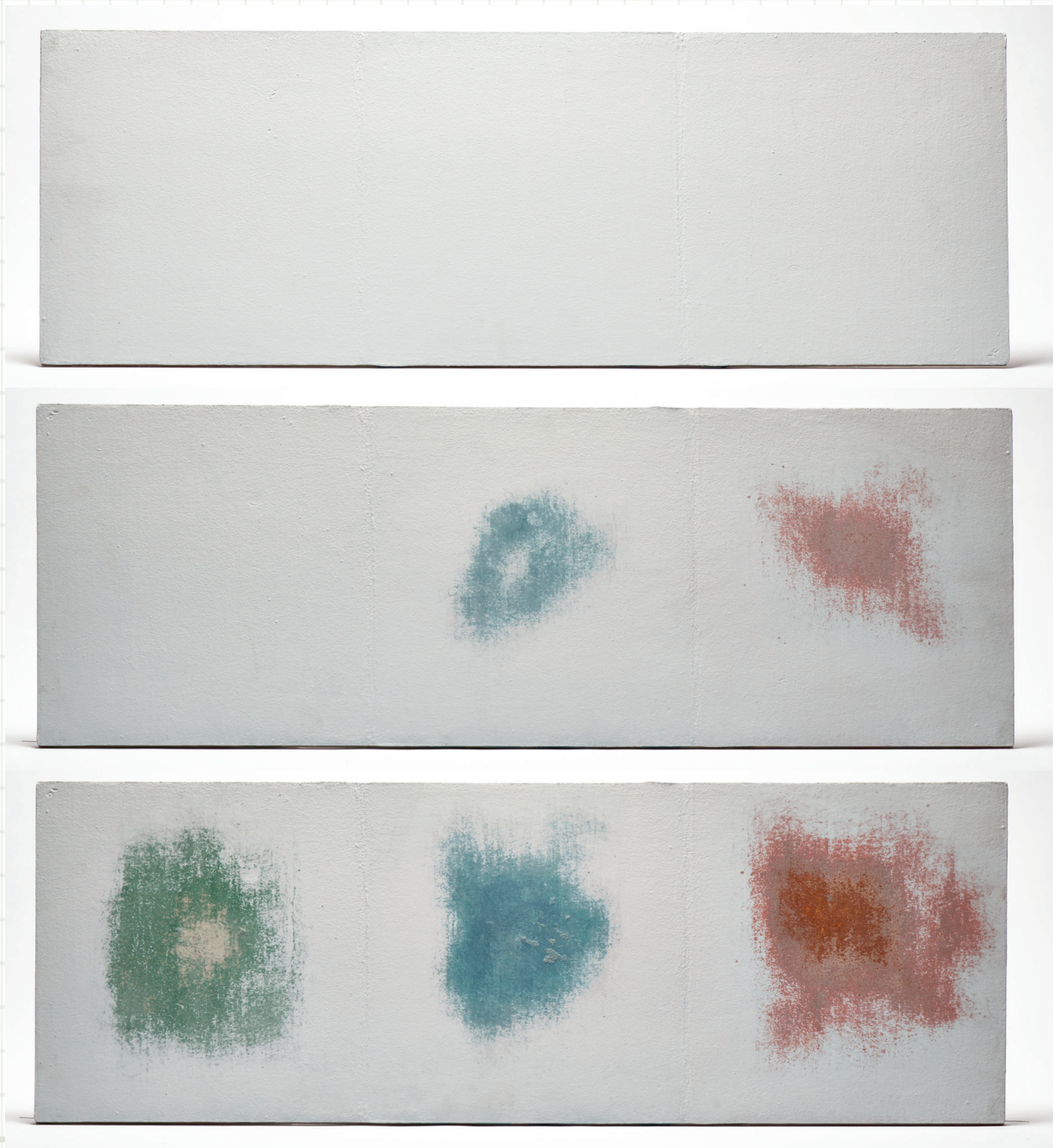


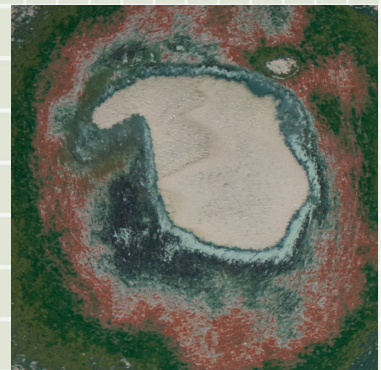
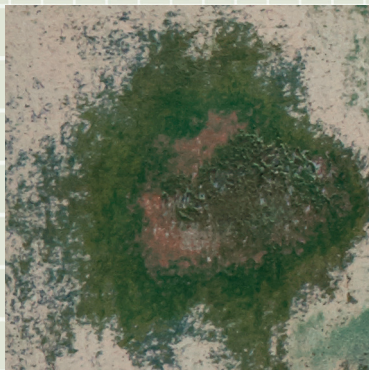
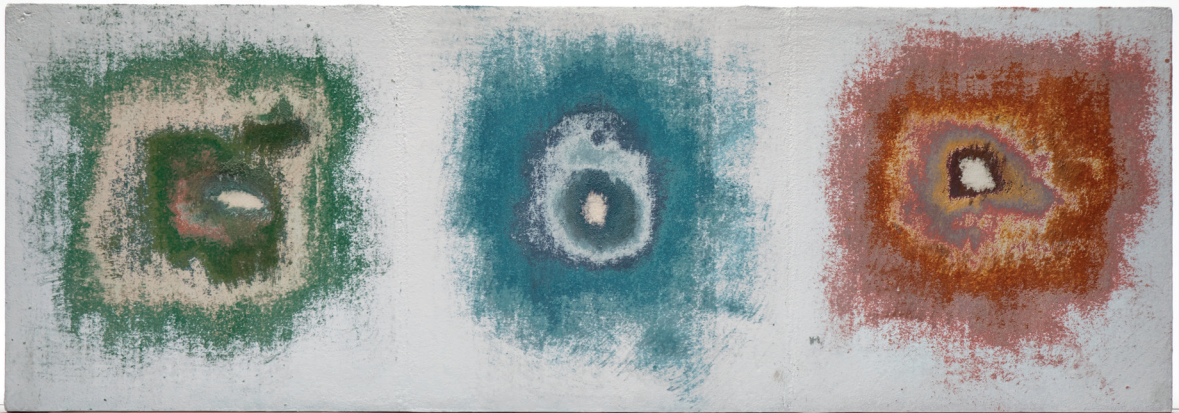
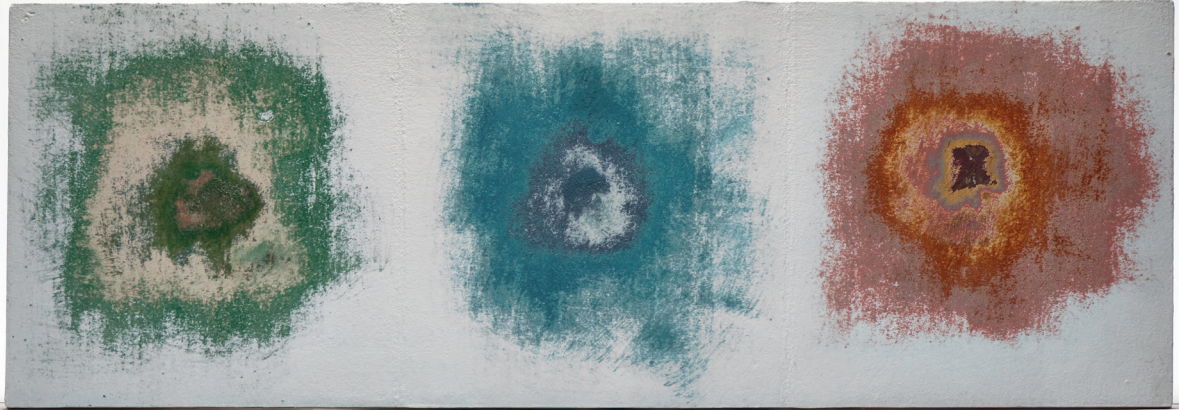
UNCOVERED#1

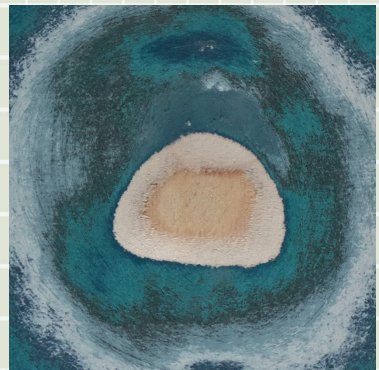
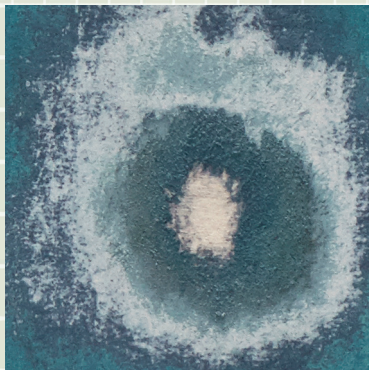
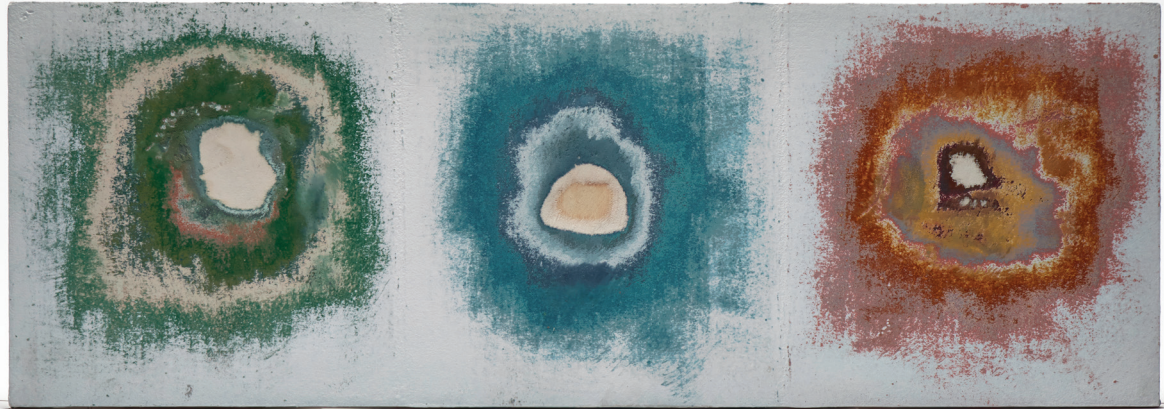
MATERIAL: WOODEN PLATE AND PAINT.

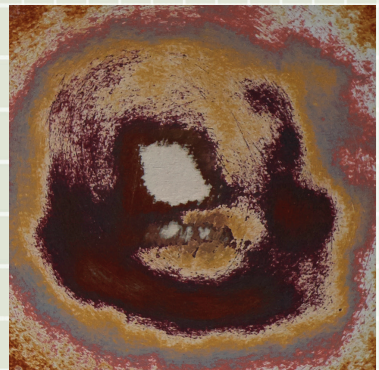
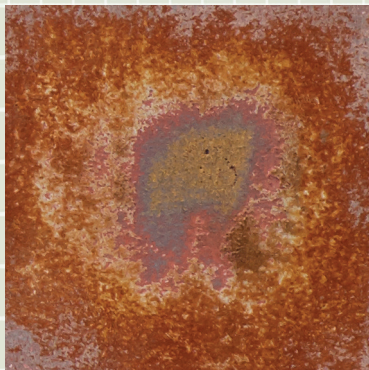
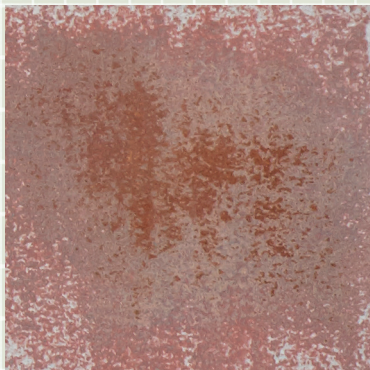
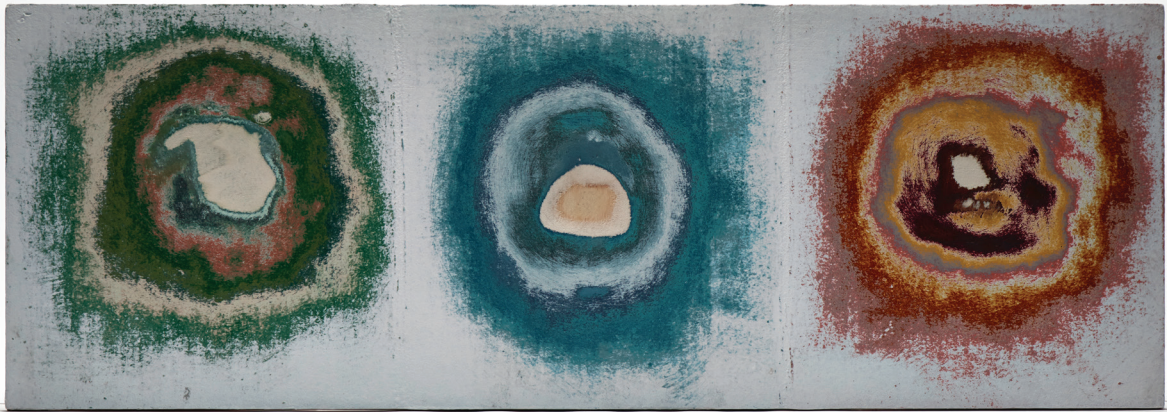
MADE: DIFFERENT COLOUR OF PAINT LAYERED IN THE PLATE.

DISCOVERD: COULOURS APPEAR WHEN LAYERS OF PAINT IS REMOVED BY SANDPAPER.









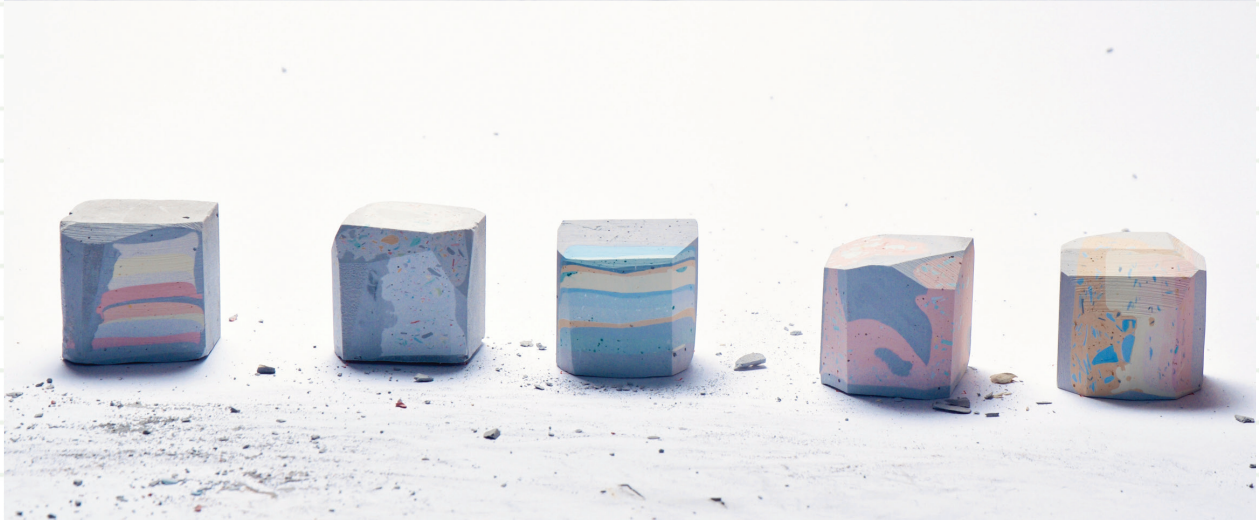
UNCOVERED#2

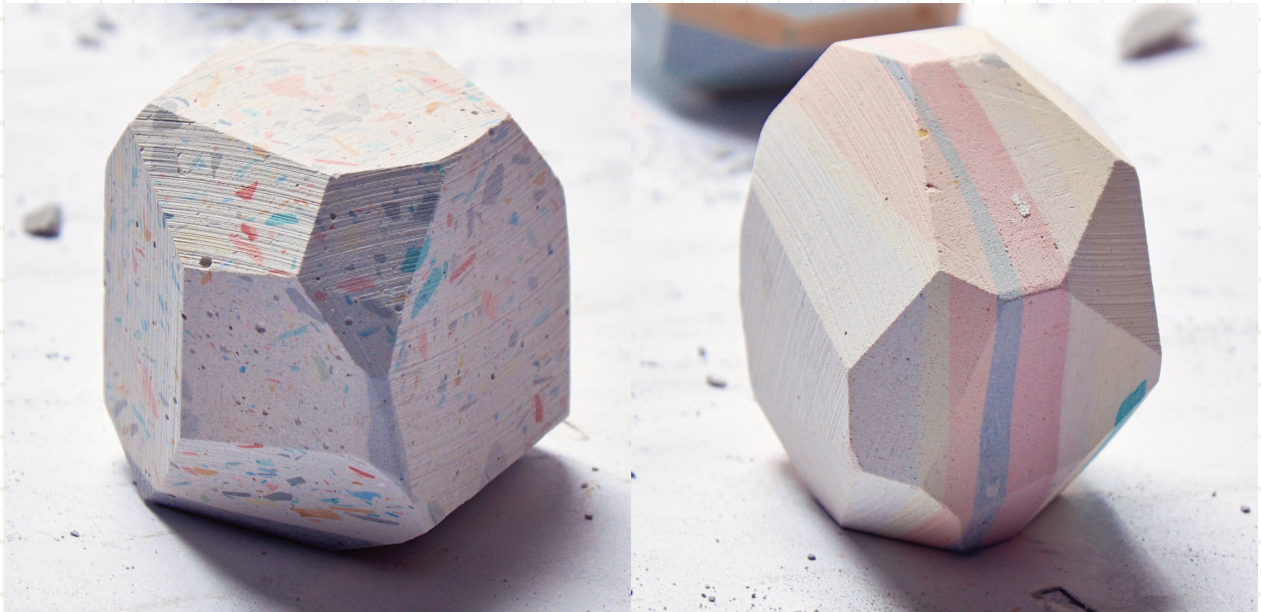
MATERIAL: PLASTER AND PIGMENT.

MADE: COLOURED PLASTER LAYERED IN A PLASTIC MOLD.

DISCOVERD: COULOURS APPEAR WHEN SIDES ARE SLOWLY POLISHED AWAY.









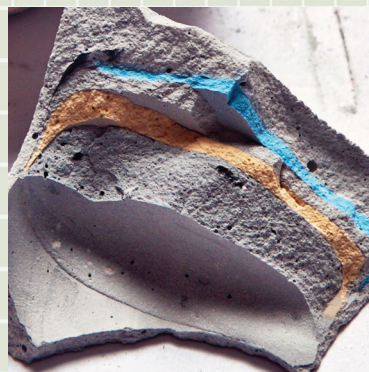
CRUSHED

MATERIAL: PLASTER AND PIGMENT.

MADE: COLOURED PLASTER LAYE-
RED IN A PLASTIC MOLD.

DISCOVERD: COULOURS APPEAR WHEN PLA-
STER BROKEN WITH HAMMER.



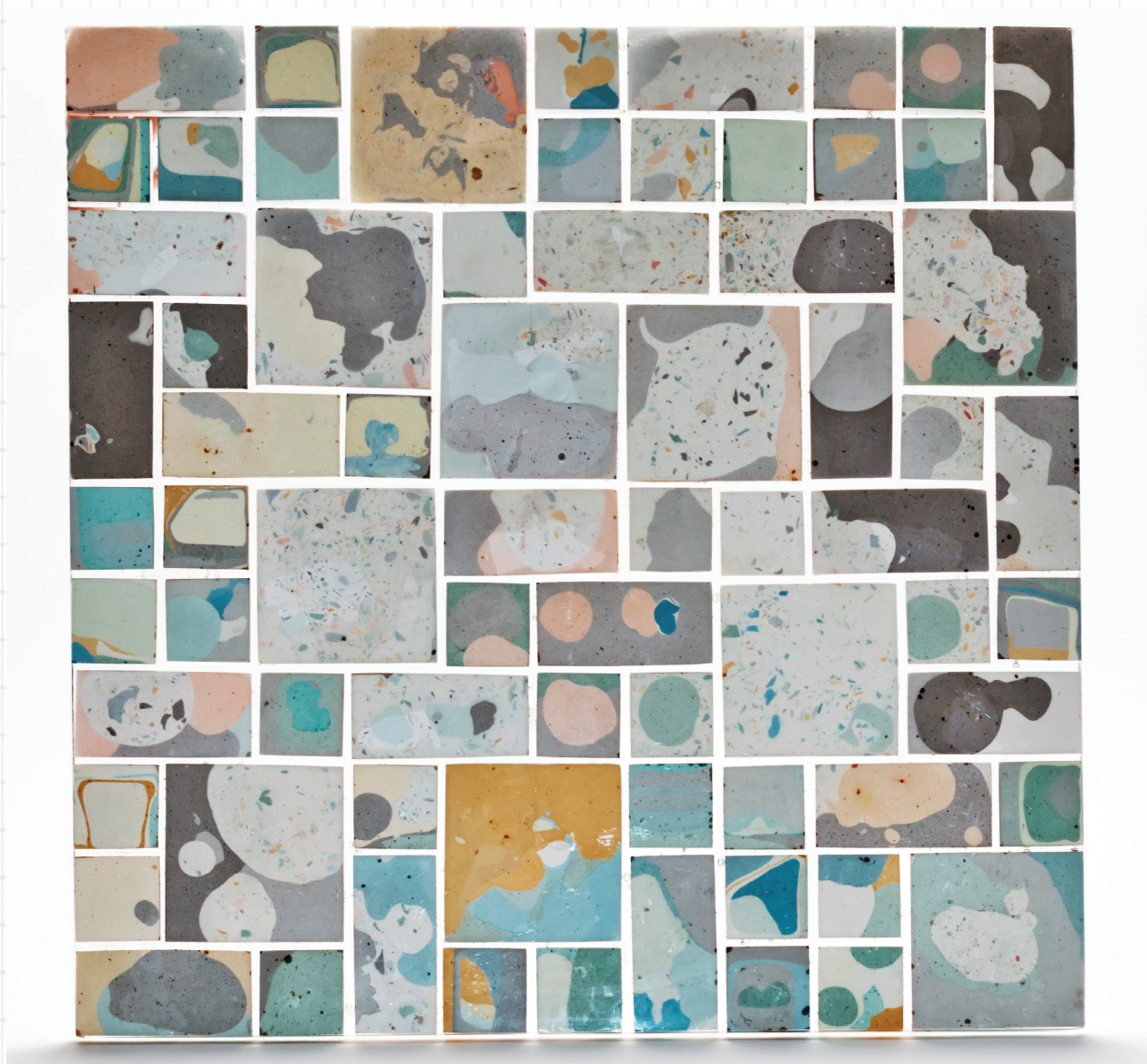


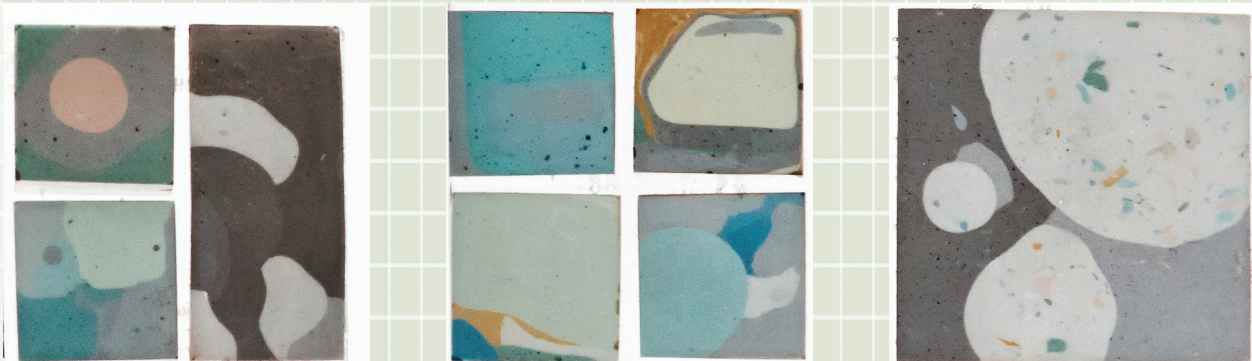
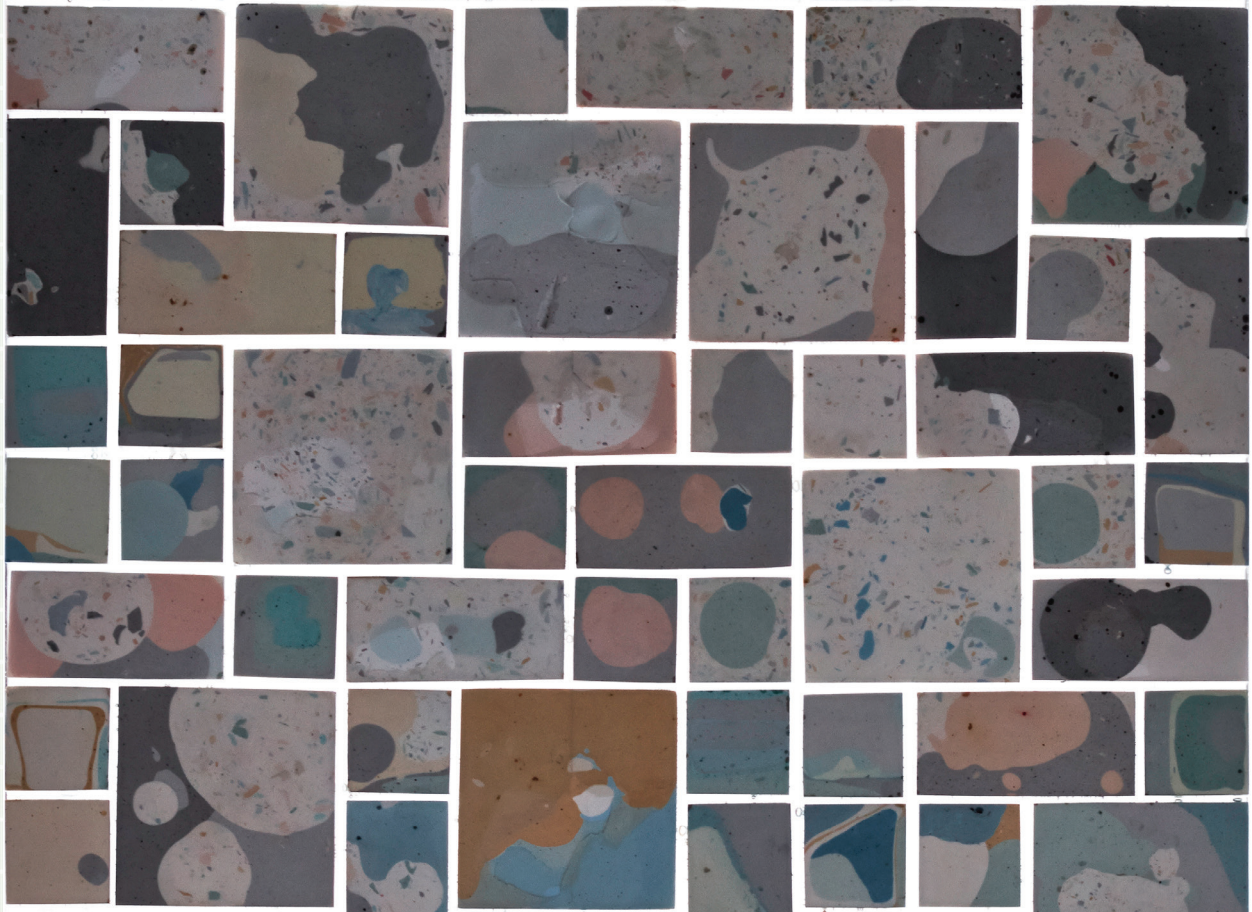
MIXED

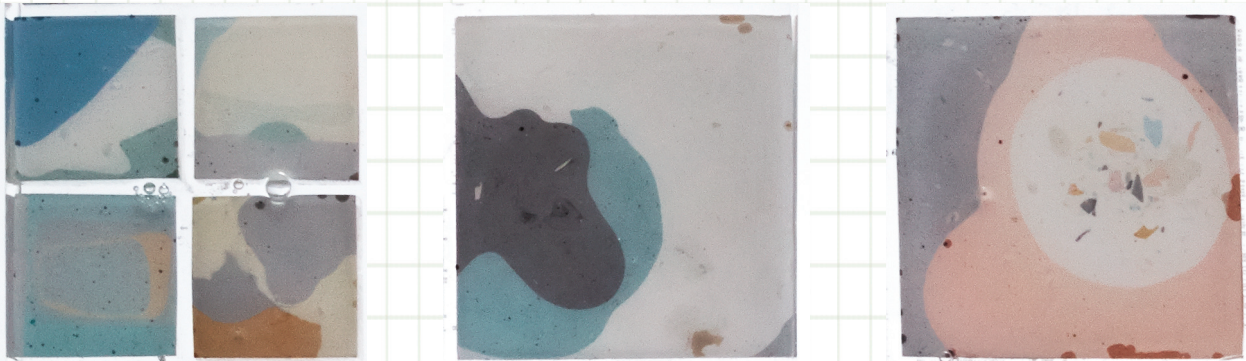
MATERIAL: PLASTER PIGMENT AND RESIN.

MADE: COLOURED PLASTER LAYERED IN A PLASTIC MOLD, SANDED IN DIRECT SURFACE AND COVERED WITH RESIN.

DISCOVERD: SURFACE CAN BE USED ON BOTH SIDES, THE COLOR OR LIGHT OF THE BACKGROUND AFFECTS THE SURFACE.









SPLASHED

MATERIAL: WATER AND CMYK.

MADE: SPLASHED WATER PHOTOGRAPHED AND COLOURS PLACED WITH PHOTOSHOP.

DISCOVERD: LIGHT IS REPLACED WITH COLOUR.

